



Visual BI Extensions for SAP BusinessObjects Design Studio (VBX) – Roadmap

January 2017

Ingo Hilgefert
VP Product Management & SAP Mentor

WWW.VISUALBI.COM



Legal Disclaimer

This presentation outlines our general product direction and should not be relied on in making a purchase decision. This presentation is not subject to your license agreement or any other agreement with Visual BI Solutions. Visual BI Solutions has no obligation to pursue any course of business outlined in this presentation or to develop or release any functionality mentioned in this presentation. This presentation and Visual BI Solutions's strategy and possible future developments are subject to change and may be changed by Visual BI Solutions at any time for any reason without notice. This document is provided without a warranty of any kind, either express or implied, including but not limited to, the implied warranties of merchantability, fitness for a particular purpose, or non-infringement. Visual BI Solutions assumes no responsibility for errors or omissions in this document, except if such damages were caused by Visual BI Solutions intentionally or grossly negligent.

Visual BI Solutions

Focus on SAP BI & Analytics



We are proud to track the record of **100% Customer Satisfaction**



Visual BI is a leading all-in-one BI Enablement firm that provides the consulting services, software products and analytical solutions that enterprise customers need to achieve agile, mobile, self-service and real-time BI.

Services

Strategy & Architecture
Development
Migration
Implementation
Sizing & Tuning
Data Visualization
Big Data
Data Warehousing
Managed Services

Products

Visualization add-ons for:

- SAP BusinessObjects Design Studio
- SAP Lumira
- SAP Dashboards / Xcelsius

Analytic Solutions

BI Content / Dashboards by LoB
Predictive Analytics
Big Data Solutions

SAP® Certified
Integration with SAP BusinessObjects

- Visual BI Extensions are an Add-On product for SAP BusinessObjects Design Studio
 - certified by SAP
 - compatible with SAP BusinessObjects Design Studio 1.4 and higher
 - seamlessly integrate with SAP BusinessObjects Design Studio client and SAP BusinessObjects BI Platform
 - deliver over 40 additional chart types
 - provide advanced mapping capabilities
 - combine filtering with advanced alerting capabilities
 - increase your developer productivity by focusing more on visual aspects and less on scripting and coding (CSS)
 - allow for rapid-prototyping using various components

“Visual BI Extensions provide an easy & cost efficient way to add advanced visualizations to SAP BusinessObjects Design Studio.”

Why should you consider our Visual BI Extensions ?

Key Features

- Save time by using extensive properties directly in SAP BusinessObjects Design Studio
- Increase your developer productivity by using out of the box features, such as export and drill down
- Increase your user adoption with large set of advanced visualizations
- Leverage our advanced mapping capabilities to integrate geographic information with our existing BI content
- Mobilize your dashboards without the need to separately develop for specific devices using our Responsive UI container

Our Advantage

- Partner for SAP BusinessObjects Design Studio since the first release
- Long time experience in SAP BW, SAP HANA, SAP BusinessObjects
- Focus not only on technology but also visualization aspects
- A Strategic partner that is able to deliver an end-to-end solution

Visual BI Extensions for SAP BusinessObjects Design Studio Roadmap



VBX 1.5.x (Q3 2016)

Charts

- Additional Chart Types
- Advanced Gauges
- Lasso Style Selection

Maps

- Additional Map Layer:
 - Choropleth
 - Bubble
- Conditional Formatting for Maps

Selectors & Filters

- Support for Compounded Characteristics

Utilities

- Responsive UI
 - Device specific font re-sizing
 - Support for Multi-Screen
- Advanced KPI Tile
- Fully Scriptable Export Options

VBX 1.6.x (Q2 2017)

Charts

- Additional Charts
- Complete Style Sheet Support
- Context Menu Support
- Custom Tooltip
- Scripting Support for Data Utility

Gantt Charts

- New Gantt Chart component

Maps

- Support for large data volumes
- Additional Charting Layer
- Geo Fencing capabilities

Selectors & Filters

- Period Selector for Day & Week
- Hierarchy support for Facet Filter
- Exclude option for Hierarchical Filter

Utilities

- Style Sheet Support for Table Component
- Support for large data volume in Table
- Excel Export for Table component
- Context Menu for Table component

VBX 1.7.x (Q3 2017)

Charts

- Additional Charts
- Trellis Support
- Variance Support

Gantt Charts

- Support for PERT charts

Maps

- Multi-Data Source Map Layer
- Flow Layer
- Indoor Analytics

Selectors & Filters

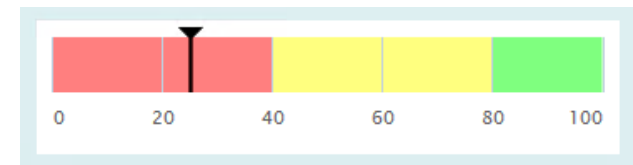
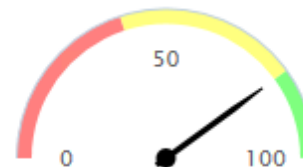
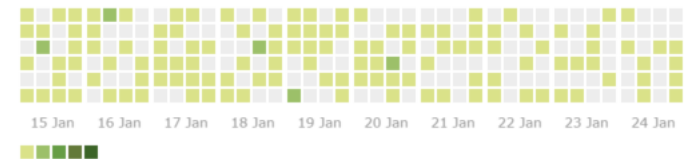
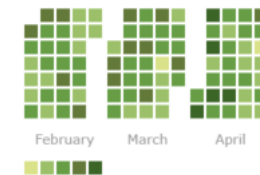
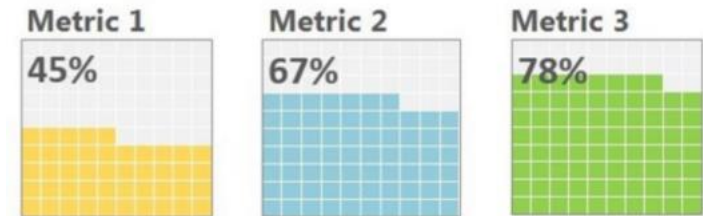
- List Box and Combo Box Enhancements
- Alerting for Period Selector

Utilities

- KPI Tile Enhancements
- Additional Data Sources
- Export Enhancements

Visual BI Extensions – Charts

- New Chart Types
 - Calendar Heat Map
 - Waffle Chart
 - Tree Map
 - Drill Down Tree Map
 - Risk Matrix
- Additional Chart Functionality
 - Lasso Selection for Charts
 - Data Range Selection
- New Advanced Circular & Linear Gauge
 - Up to 2 data values
 - Additional Trend value possible
 - Advanced Conditional Formatting



Visual BI Extensions - Maps

- Support for additional map layer in combination with GeoJSON
 - Choropleth
 - Bubble Map
- Advanced Conditional formatting capabilities
 - Add conditional formatting rules to marker layer or choropleth layer
 - Rules can be based on single measures, measure calculation, or target value definition

Visual BI Extensions - Selector

- Support for Compounded Characteristics for Listbox, Combo Box, and Facet Filter
- New Search Functionality for the Hierarchical Filter
- Expand To Level option for the Hierarchical Filter

Visual BI Extensions - Utilities

- Responsive UI
 - Device specific Font Re-Sizing
 - Multi-Screen Support
- Additional Export Options
 - Scripting functionality to allow to by-pass the export UI
 - Support for large tables
- Table Component
 - Allowing for “fast table mode” for larger volumes
- New Component: Pictogram Component
 - Using images and icons as representation
 - Allow for partial fills of images
- New Component: Advanced KPI Tile
 - Flexible tile structure
 - Large set of display options
 - Integrated with Responsive UI

Visual BI Extensions for SAP BusinessObjects Design Studio Roadmap



VBX 1.5.x (Q3 2016)

Charts

- Additional Chart Types
- Advanced Gauges
- Lasso Style Selection

Maps

- Additional Map Layer:
 - Choropleth
 - Bubble
- Conditional Formatting for Maps

Selectors & Filters

- Support for Compounded Characteristics

Utilities

- Responsive UI
 - Device specific font re-sizing
 - Support for Multi-Screen
- Advanced KPI Tile
- Fully Scriptable Export Options

VBX 1.6.x (Q2 2017)

Charts

- Additional Charts
- Complete Style Sheet Support
- Context Menu Support
- Custom Tooltip
- Scripting Support for Data Utility

Gantt Charts

- New Gantt Chart component

Maps

- Support for large data volumes
- Additional Charting Layer
- Geo Fencing capabilities

Selectors & Filters

- Period Selector for Day & Week
- Hierarchy support for Facet Filter
- Exclude option for Hierarchical Filter

Utilities

- Style Sheet Support for Table Component
- Support for large data volume in Table
- Excel Export for Table component
- Context Menu for Table component

VBX 1.7.x (Q3 2017)

Charts

- Additional Charts
- Trellis Support
- Variance Support

Gantt Charts

- Support for PERT charts

Maps

- Multi-Data Source Map Layer
- Flow Layer
- Indoor Analytics

Selectors & Filters

- List Box and Combo Box Enhancements
- Alerting for Period Selector

Utilities

- KPI Tile Enhancements
- Additional Data Sources
- Export Enhancements

Visual BI Extensions – Charts

- Additional Chart Types
 - Time Series
 - Bar on Bar
 - Bar on Pie
 - Sunburst
 - Sankey
- Context Menu for Charts
 - Support for common functionality via Context Menu (Filter, Sort, Rank, ...)
 - Customizable using Additional Properties
- Additional Chart Functionality
 - Fully supported Style Sheets
 - Ability to define custom tooltips
 - Ability to leverage Data Utility functionality via scripting

Visual BI Extensions – Gantt Charts

- New component for Gantt Charts

Visual BI Extensions – Maps

- Support for large data volumes (> 100K points)
- Additional Chart Layer for Maps (Pie, Column, Bar)
- Support for Geo Fencing capabilities
 - Focus data selection based on current location & specific radius
 - For example:
 - Show all customer locations around my current location with a radius of 25 miles

Visual BI Extensions – Selector

- New component: Period Selector for Day and Week
- Facet Filter: Hierarchy support
 - Ability to select leaf and node
 - Ability to switch between hierarchies
- Hierarchical Filter
 - Ability to exclude nodes and leaves

Visual BI Extensions – Utilities

- Table component
 - Fully supported Style Sheets
 - Support for Large data volumes (>100K cells)
 - Additional Excel Export capabilities
 - Context Menu with common features, such as Filter, Sort, Rank, ...

Visual BI Extensions for SAP BusinessObjects Design Studio Roadmap



VBX 1.5.x (Q3 2016)

Charts

- Additional Chart Types
- Advanced Gauges
- Lasso Style Selection

Maps

- Additional Map Layer:
 - Choropleth
 - Bubble
- Conditional Formatting for Maps

Selectors & Filters

- Support for Compounded Characteristics

Utilities

- Responsive UI
 - Device specific font re-sizing
 - Support for Multi-Screen
- Advanced KPI Tile
- Fully Scriptable Export Options

VBX 1.6.x (Q2 2016)

Charts

- Additional Charts
- Complete Style Sheet Support
- Context Menu Support
- Custom Tooltip
- Scripting Support for Data Utility

Gantt Charts

- New Gantt Chart component

Maps

- Support for large data volumes
- Additional Charting Layer
- Geo Fencing capabilities

Selectors & Filters

- Period Selector for Day & Week
- Hierarchy support for Facet Filter
- Exclude option for Hierarchical Filter

Utilities

- Style Sheet Support for Table Component
- Support for large data volume in Table
- Excel Export for Table component
- Context Menu for Table component

VBX 1.7.x (Q3 2017)

Charts

- Additional Charts
- Trellis Support
- Variance Support

Gantt Charts

- Support for PERT charts

Maps

- Multi-Data Source Map Layer
- Flow Layer
- Indoor Analytics

Selectors & Filters

- List Box and Combo Box Enhancements
- Alerting for Period Selector

Utilities

- KPI Tile Enhancements
- Additional Data Sources
- Export Enhancements

Visual BI Extensions – Charts

- Additional Chart Types
 - Statistical Process Control (SPC) Charts
 - Slopegraphs
 - Motion Chart
 - Custom Heat / Overlay Maps
- Additional Chart Functionality
 - Support Trellis Functionality
 - Support for Animations based on selected dimensions
 - Support for Variance visualization for selected charts

Visual BI Extensions – Gantt Charts

- Additional support for PERT charts

Visual BI Extensions – Maps

- Additional Flow Layer support (Example: Airline traffic)
- Ability to configure a data source for each individual map layer (multiple source for one map component)
- Ability to create Indoor Analytics scenarios

Visual BI Extensions – Selector

- Listbox and Combo Box Enhancements
- Ability to integrate alerts into Period Selectors

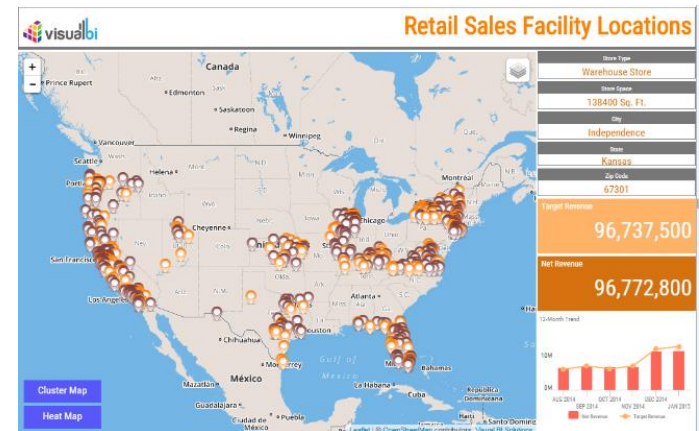
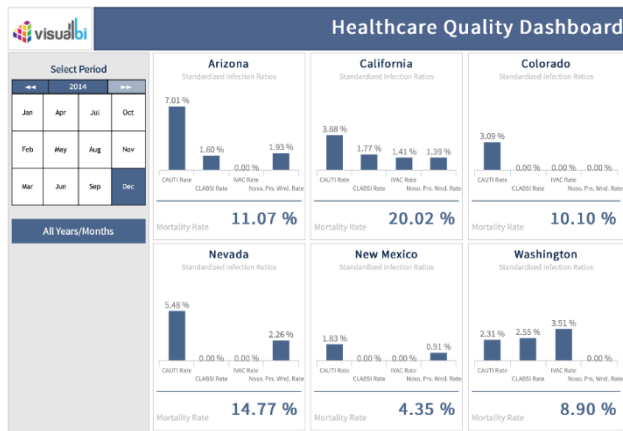
Visual BI Extensions – Utilities

- **Advanced KPI Tile**
 - Ability to leverage multiple data source in a single KPI Tile
 - Option to leverage delta sparkline charts
- **Export Enhancements**
 - Support for Export to Excel
 - Export of “non-visible” items (for example: 2nd page of a Pagebook component)
- **Data Source**
 - Generic Web Service connectivity
 - Web Intelligence & Crystal Reports as a data source

Download your Trial from:

www.visualbi.com/VBXtrial

You will receive all components (charts, maps, selectors, utilities)
No functional limitation





Ingo Hilgefort
VP Product Management
Ingo@VisualBI.com
Twitter : @ihilgefort

©Visual BI Solutions, Inc. (“Visual BI”). All rights reserved. No part of this document may be reproduced or transmitted in any form or by any means, electronic or mechanical, for any purpose, without the express written permission of Visual BI. Under the law, reproducing includes translating into another language or format.

Visual BI® and the Visual BI logo design are trademarks of Visual BI. in the United States and various other countries. All other trademarks are the property of their respective owners.

SAP and other SAP products and services mentioned herein as well as their respective logos are trademarks or registered trademarks of SAP SE (or an SAP affiliate company) in Germany and other countries. All other product and service names mentioned are the trademarks of their respective companies. Please see <http://www.sap.com/corporate-en/legal/copyright/index.epx#trademark> for additional trademark information and notices.