



## ***Visual BI Extensions Export***

***- Installation Guide -***

1	Copyright	3
1.1	Trademark Information	3
1.2	Patent Information	3
1.3	SAP Trademarks	3
2	Introduction	4
2.1	Who Should Read This Guide?	4
3	Software Registration using administrative rights	5

# 1 Copyright

©Visual BI Solutions, Inc. (“Visual BI”). All rights reserved. No part of this document may be reproduced or transmitted in any form or by any means, electronic or mechanical, for any purpose, without the express written permission of Visual BI. Under the law, reproducing includes translating into another language or format.

As between the parties, Visual BI retains title to, and ownership of, all proprietary rights with respect to the software contained within its products. The software is protected by United States copyright laws and international treaty provision. Therefore, you must treat the software like any other copyrighted material (e.g. a book or sound recording).

Every effort has been made to ensure that the information in this manual is accurate. Visual BI Solutions is not responsible for printing or clerical errors. Information in this document is subject to change without notice.

## 1.1 Trademark Information

Visual BI® and the Visual BI logo design are trademarks of Visual BI. in the United States and various other countries. All other trademarks are the property of their respective owners.

## 1.2 Patent Information

The accompanying product is protected by one or more U.S. and foreign patents and/or pending patent applications held by Visual BI.

## 1.3 SAP Trademarks

SAP and other SAP products and services mentioned herein as well as their respective logos are trademarks or registered trademarks of SAP SE (or an SAP affiliate company) in Germany and other countries. All other product and service names mentioned are the trademarks of their respective companies. Please see <http://www.sap.com/corporate-en/legal/copyright/index.epx#trademark> for additional trademark information and notices.



[www.visualbi.com](http://www.visualbi.com)

[solutions@visualbi.com](mailto:solutions@visualbi.com)

Phone: +1 888-227-2794

Fax: +1 888-227-7192

Plano, TX ■ Dallas, TX ■ Chennai, India

## 2 Introduction

### 2.1 Who Should Read This Guide?

The Installation Guide for the Visual BI Extensions Export offered by Visual BI is meant for administrators and those people that will perform the installation of the software. The Export Service is specifically applicable for the users using the components Export to PDF, Export to PPT, Export to DOC, OData Source and Web Service Data Source (WSDL).

### 3 Software Registration using administrative rights

This section describes the steps for the Software Registration for the Visual BI Extensions (VBX) – Export Service.

1. Navigate to the folder where you placed the ZIP file you downloaded previously.
2. Unpackage the ZIP file – setup.zip – so that you have the file setup.exe.
3. Double-click the file setup.exe.

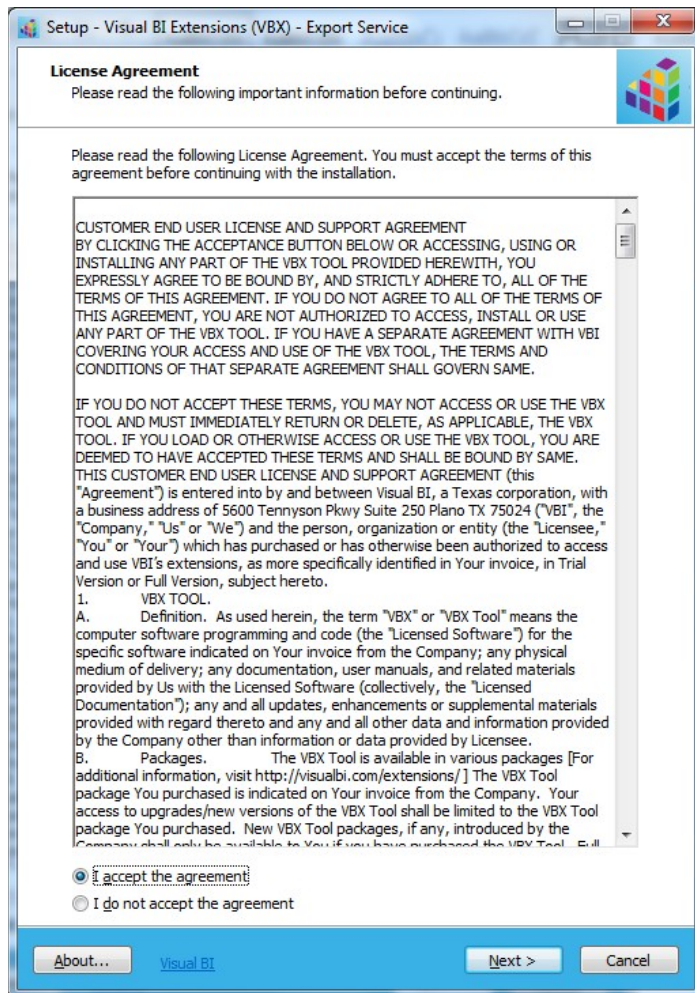


Figure 3.1: Software Agreement

4. You are being presented with the Software License Agreement (see Figure 3.1).
5. Select the option “I accept the agreement”.
6. Click Next.

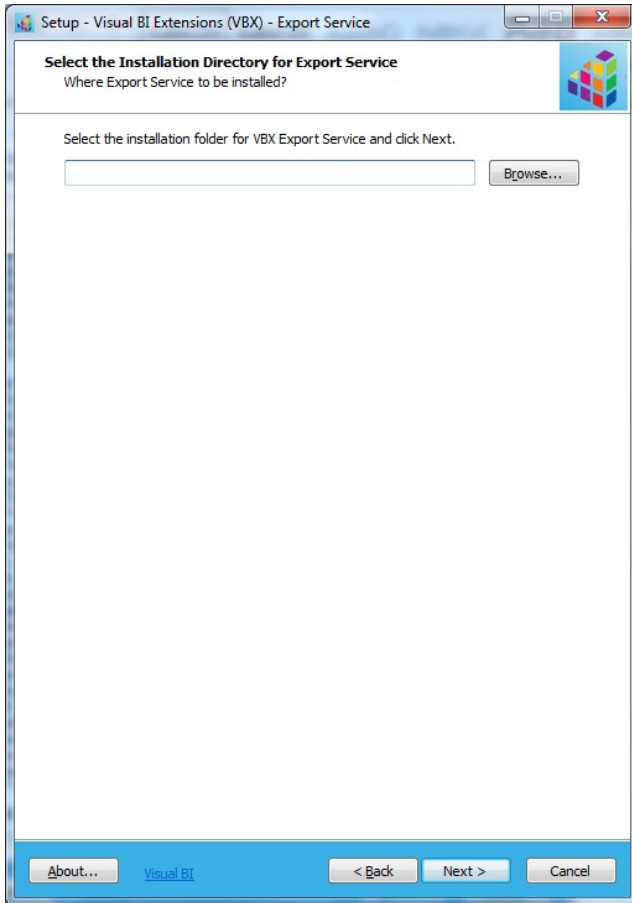


Figure 3.2: Select Folder

7. In the next step, you are being asked to provide the location of your Visual BI Extensions (VBX) – Export Service installation (see Figure 3.2).
8. Click Browse.
9. Browse to the folder for your Visual BI Extensions (VBX) – Export Service installation (see Figure 3.3).

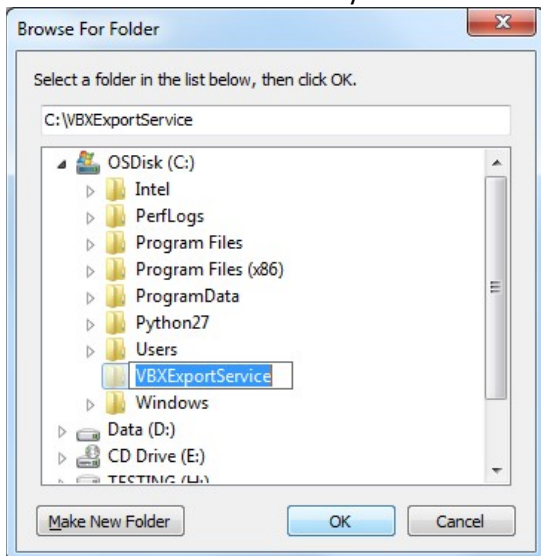
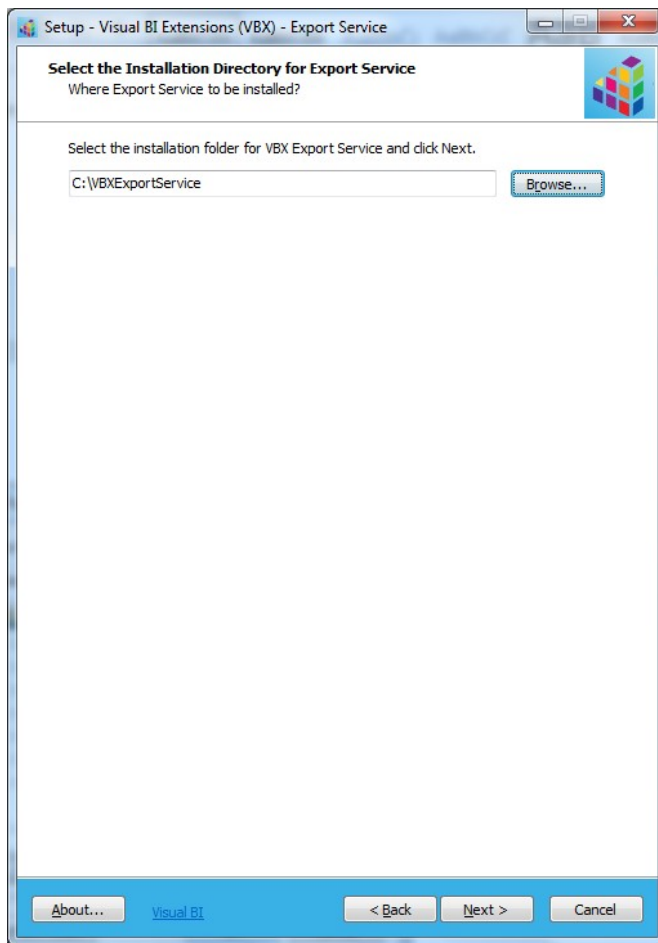


Figure 3.3: Browse for Folder

10. Click OK.
11. The selected folder path for your Visual BI Extensions (VBX) – Export Service installation will get displayed (see Figure 3.4).



*Figure 3.4: Folder Path*

12. In the next screen (see Figure 3.5) you will receive a list of Services, which will be activated.  
Prerequisite: A port must be opened in the firewall, so that any it can be accessed SMTP – host/port/username/password
13. Click Next.

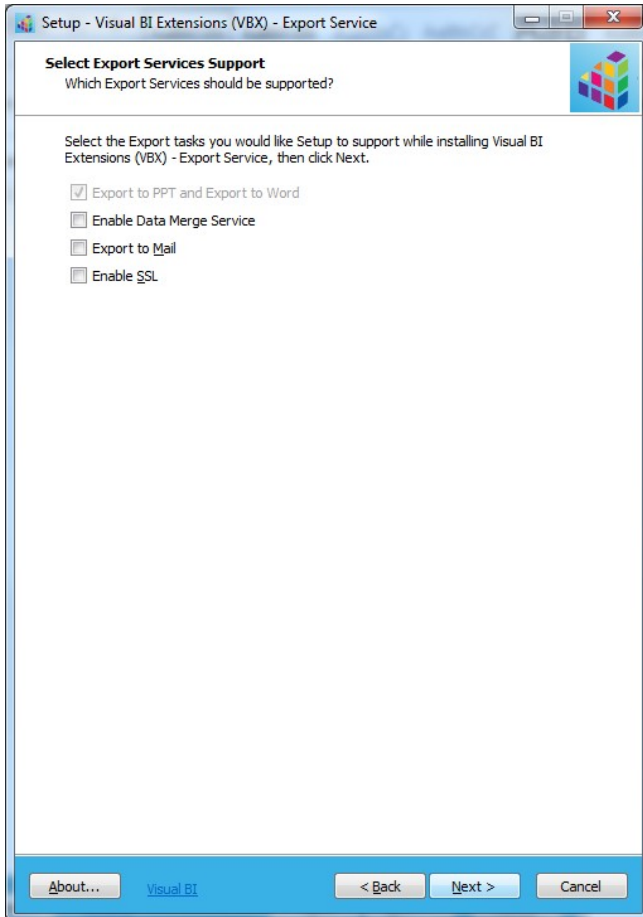


Figure 3.5: List of Services

14. Activate the option Enable Data Merge Service if you require WSDL/Data Merge.
15. Activate the options Export to Mail and Enable SSL if you require Email and SSL services.
16. Click Next.



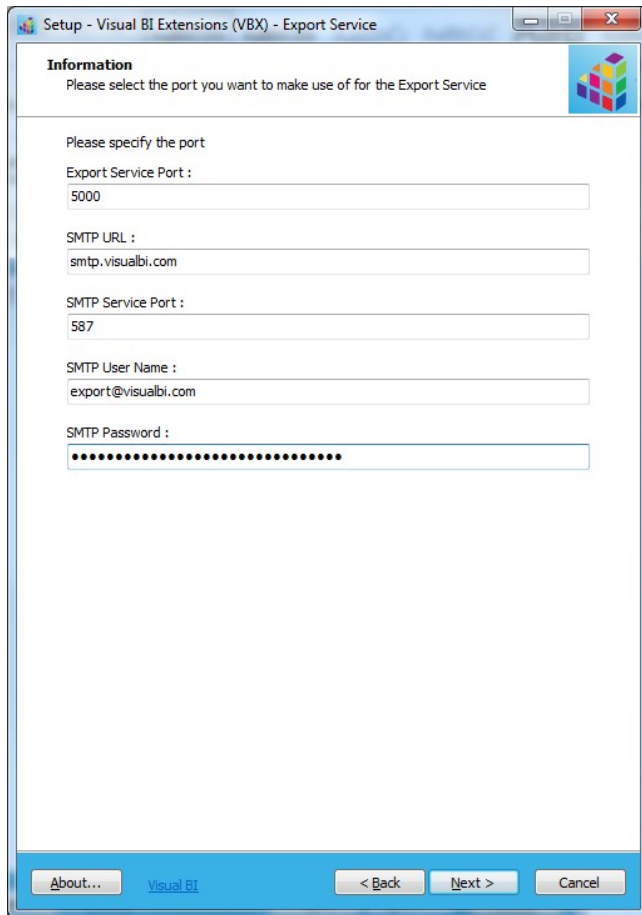


Figure 3.6: Export Service Port details

17. In Figure 3.6, set the details for the Export Service Port by providing the inputs for the following parameters
  - Export Service Port
  - SMTP URL
  - SMTP Service Port
  - SMTP User Name
  - SMTP Password
18. Click Next and the Export Service Installation process will get started (see Figure 3.7)

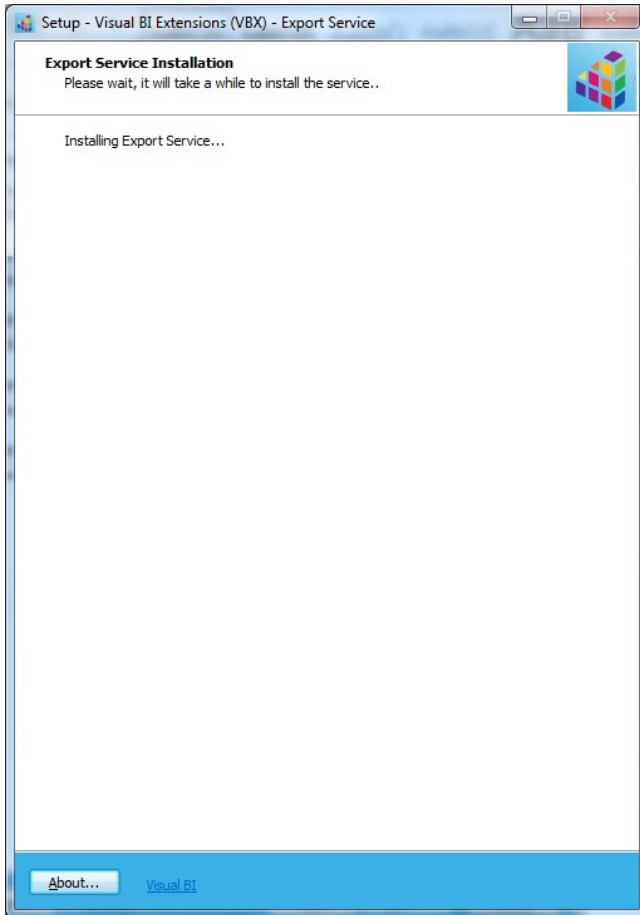


Figure 3.7: Export Service Installation

19. If Python is not installed in your system, then the Compiler Package for Python set up will be displayed (see Figure 3.8).

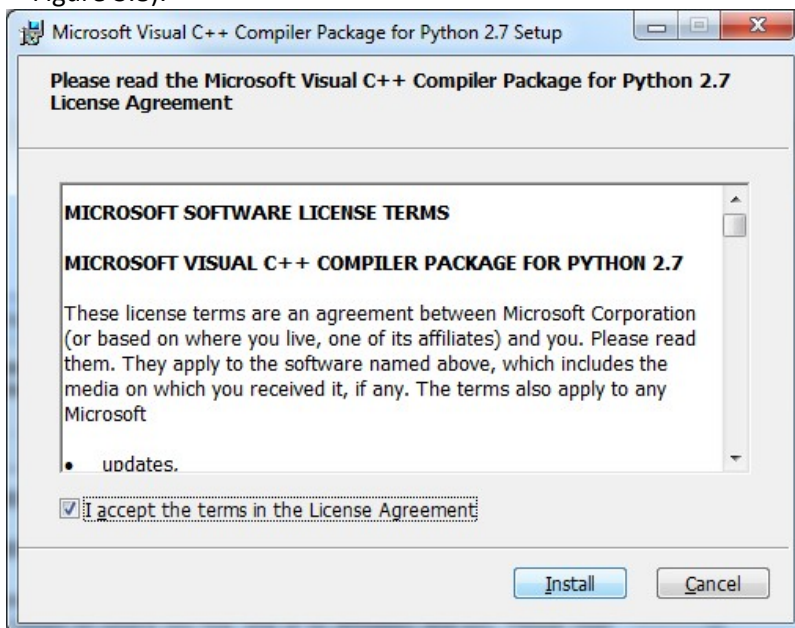


Figure 3.8: Compiler Package for Python set up

20. You are being presented with the Software License Agreement (see Figure 3.8).
21. Select the option “I accept the terms in the License Agreement”.
22. Click Install and the Installation process for Python will get started (see Figure 3.9)

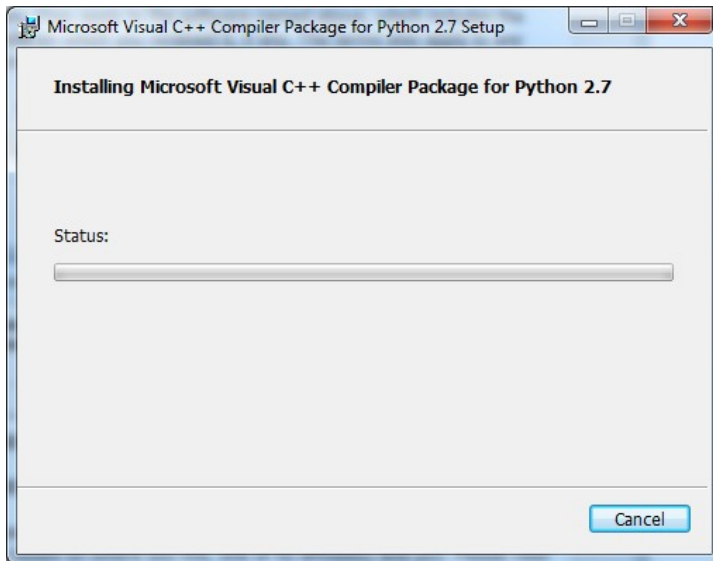


Figure 3.9: Installation process for Python

23. The Set up window for Server and Port details will be displayed (see Figure 3.10).
24. Click Ok

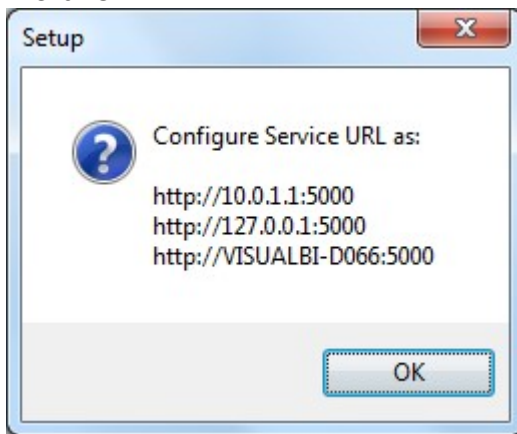


Figure 3.10: Set up window for Server and Port details

25. You can use any one of the URLs (as listed above in the Set up window) in the Additional Properties Sheet of the specified components to mention the Service URL (see Figure 3.10).
26. Click Finish to end the installation process (see Figure 3.11)

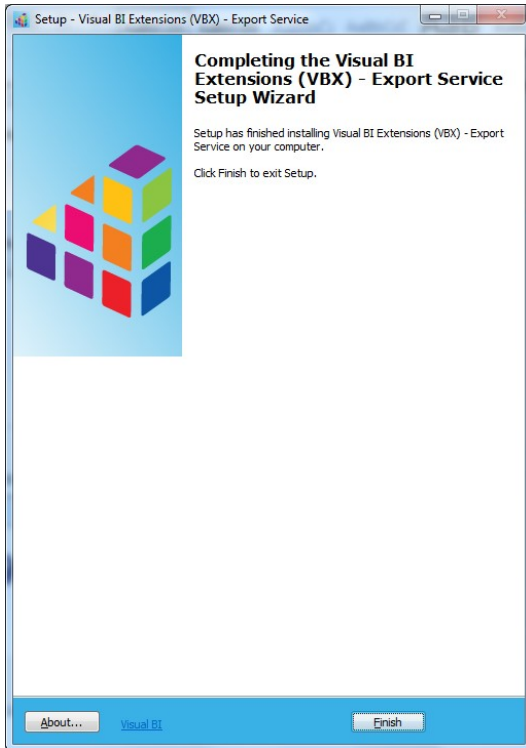


Figure 3.11: Finish Installation

27. After the registration process is finished, it will automatically open the configured server URL in the browser (see Figure 3.12).

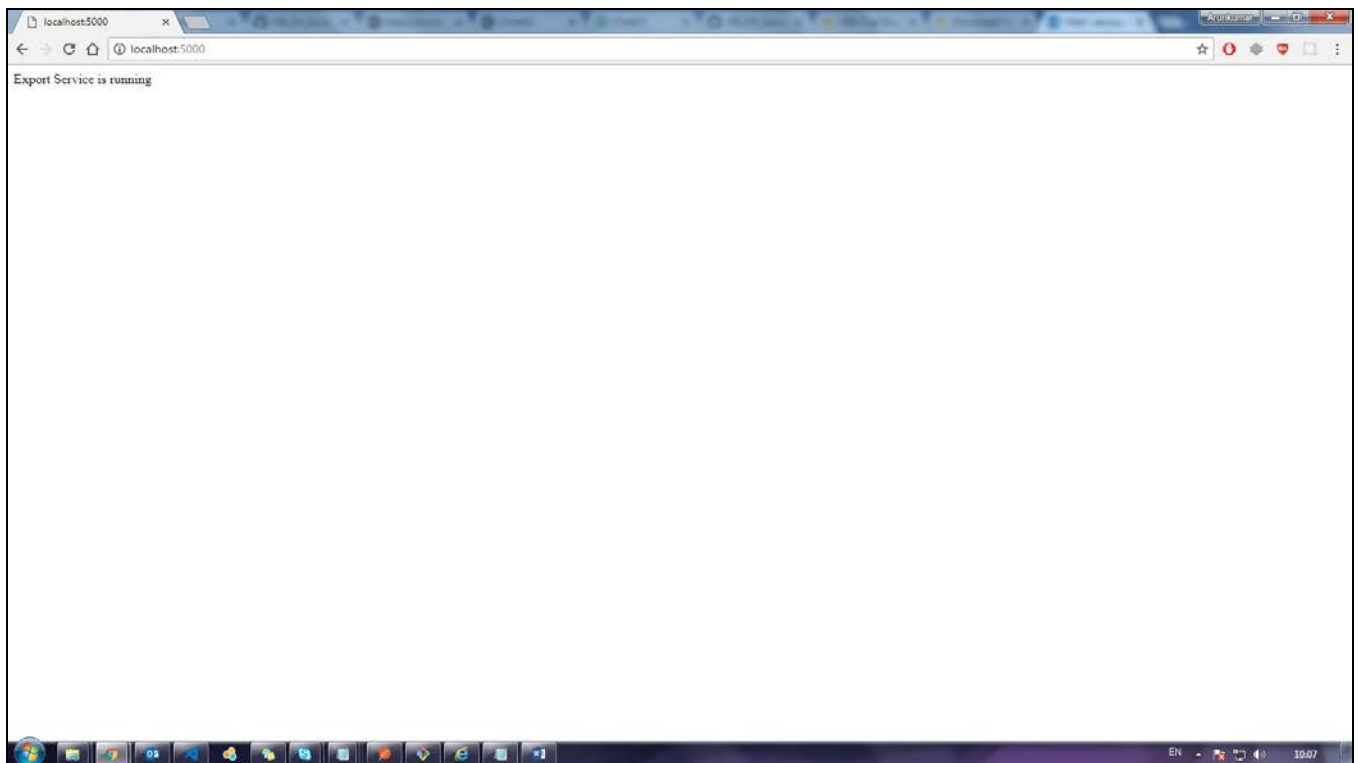


Figure 3.12: Browser with Server URL



[www.visualbi.com](http://www.visualbi.com)

[solutions@visualbi.com](mailto:solutions@visualbi.com)

Phone: +1 888-227-2794

Fax: +1 888-227-7192

Plano, TX ■ Dallas, TX ■ Chennai, India